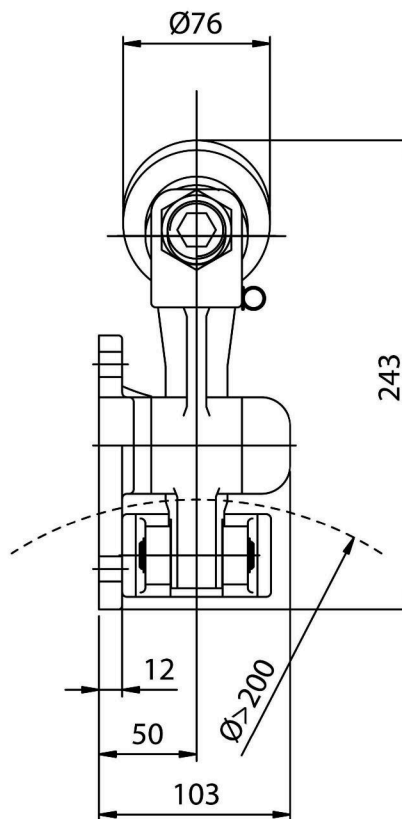
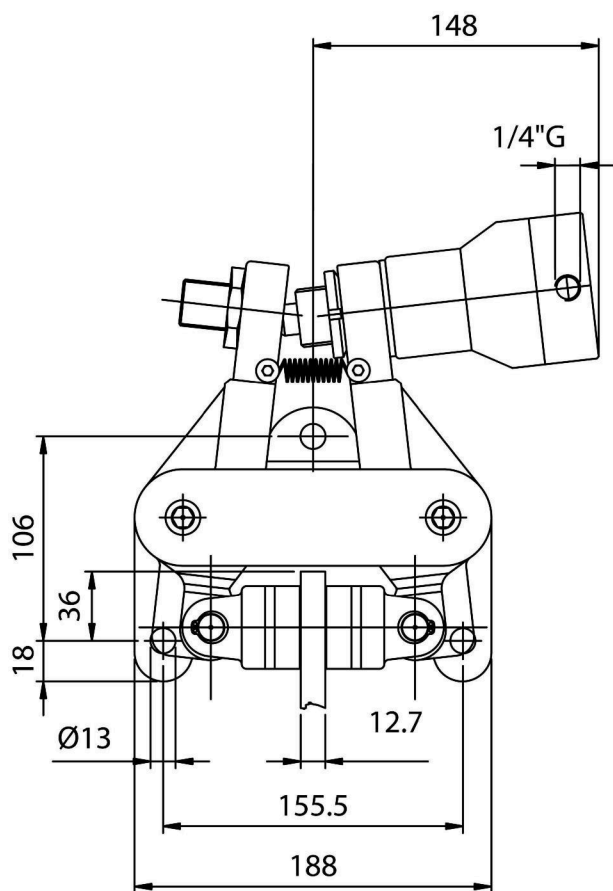


PINZE IDRAULICHE POSITIVE

HYDRAULICALLY ACTUATED
CALIPER BRAKES - oil applied

HA-GY3AD

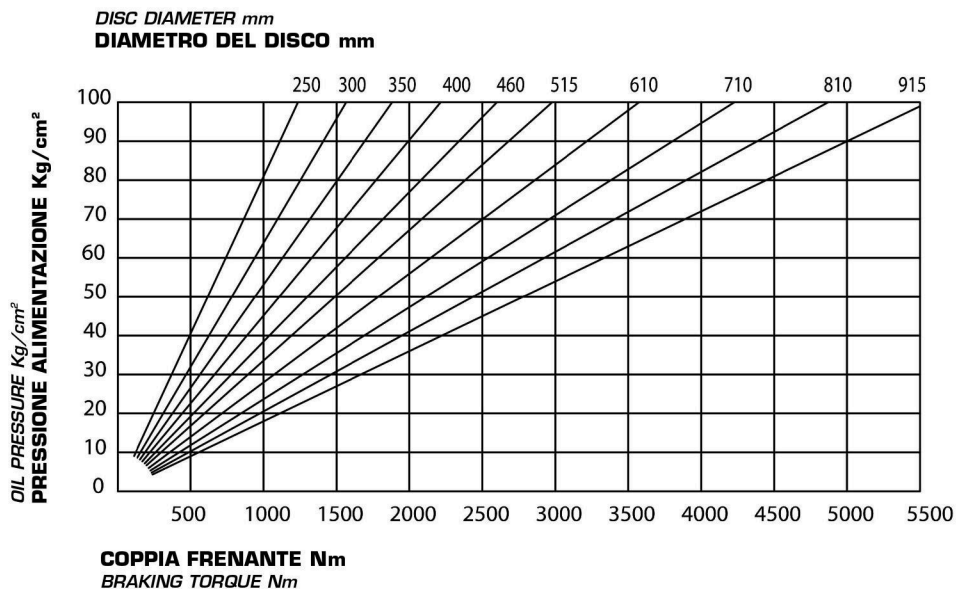


DATI TECNICI

- Md forza frenante:
13000 N a 100 bar
- Coppia dinamica:
= $Md \cdot (\text{raggio disco in m} - 0,030) = \text{Nm}$
- Pressione max 100 bar
- Volume olio 0,03 dm³
- Peso 10,8 Kg

TECHNICAL DATA

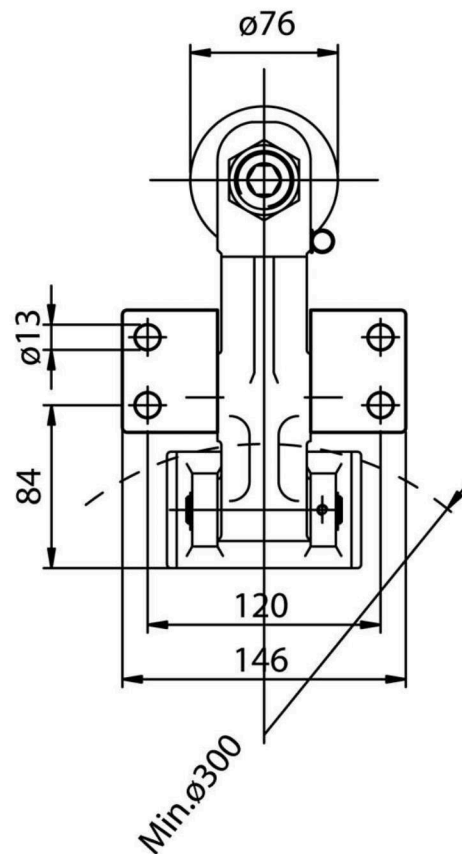
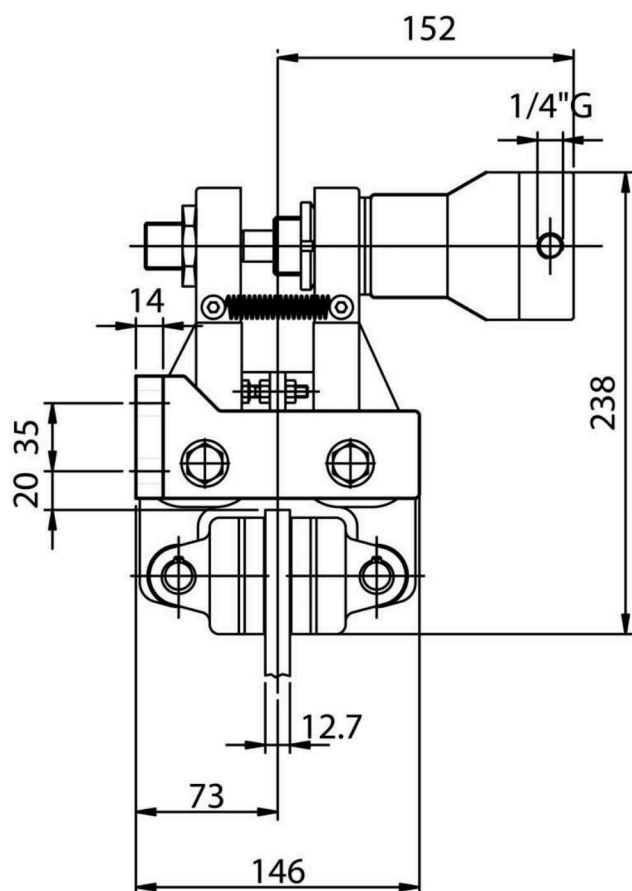
- Md braking force:
13000 N at 100 bar
- Dynamic torque:
= $Md \cdot (\text{disc radius in m} - 0,030) = \text{Nm}$
- Max pressure 100 bar
- Oil volume 0,03 dm³
- Weight 10,8 Kg



PINZE IDRAULICHE POSITIVE

HYDRAULICALLY ACTUATED
CALIPER BRAKES - oil applied

HA-HY3AD

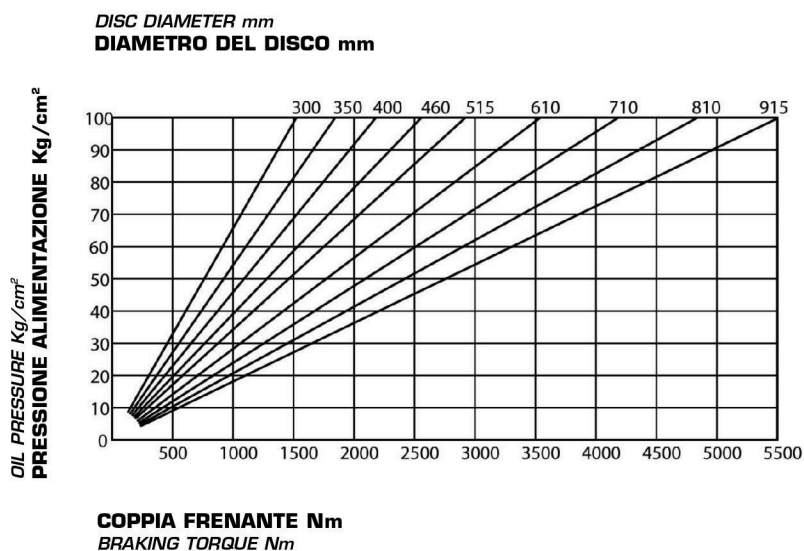


DATI TECNICI

- Md forza frenante:
13000 N a 100 bar
- Coppia dinamica:
= $Md \cdot (\text{raggio disco in m} - 0,033) = Nm$
- Pressione max 100 bar
- Volume olio 0,03 dm³
- Peso 11,3 Kg

TECHNICAL DATA

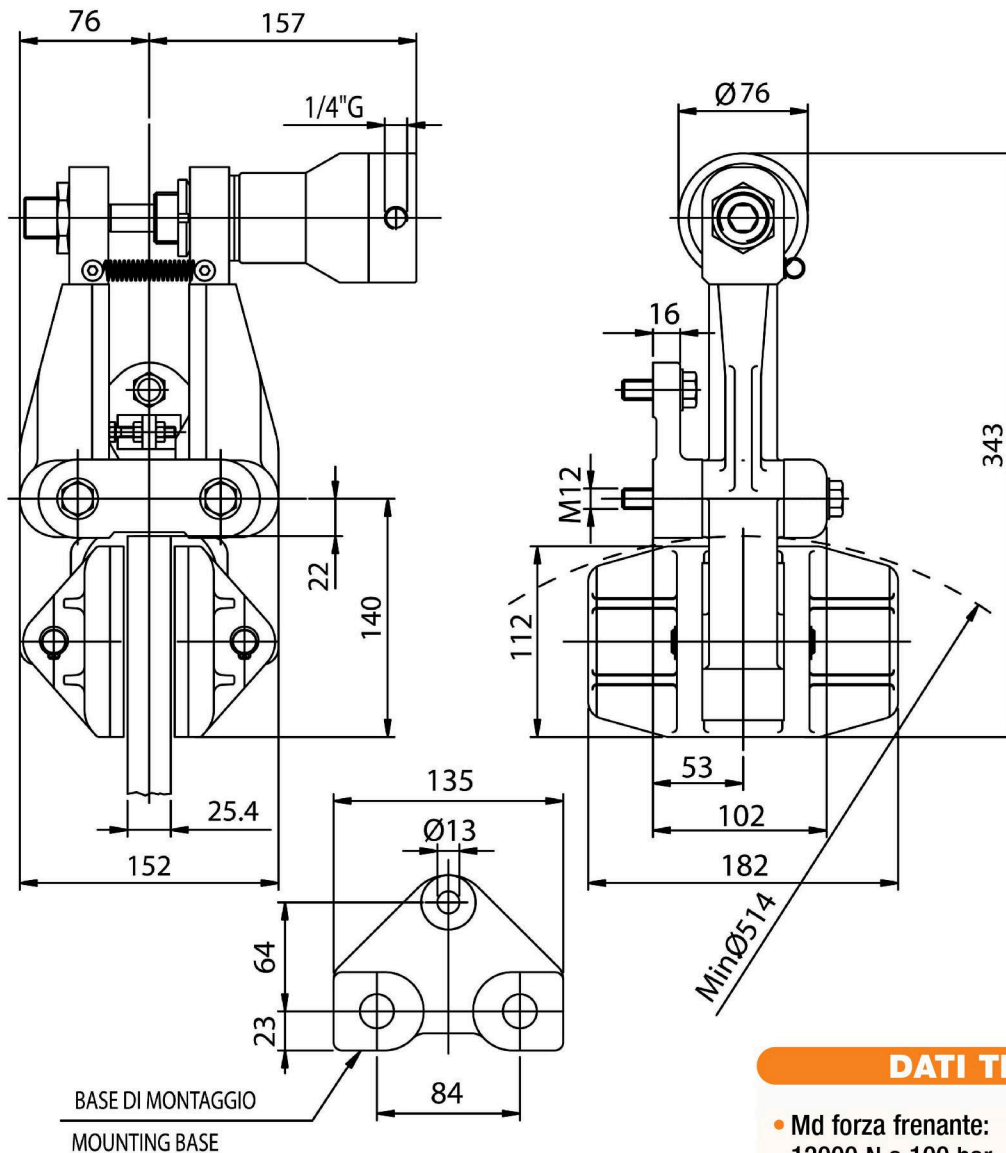
- Md braking force:
13000 N at 100 bar
- Dynamic torque:
= $Md \cdot (\text{disc radius in m} - 0,033) = Nm$
- Max pressure 100 bar
- Oil volume 0,03 dm³
- Weight 11,3 Kg



PINZE IDRAULICHE POSITIVE

HYDRAULICALLY ACTUATED
CALIPER BRAKES - oil applied

HA-LY3AD



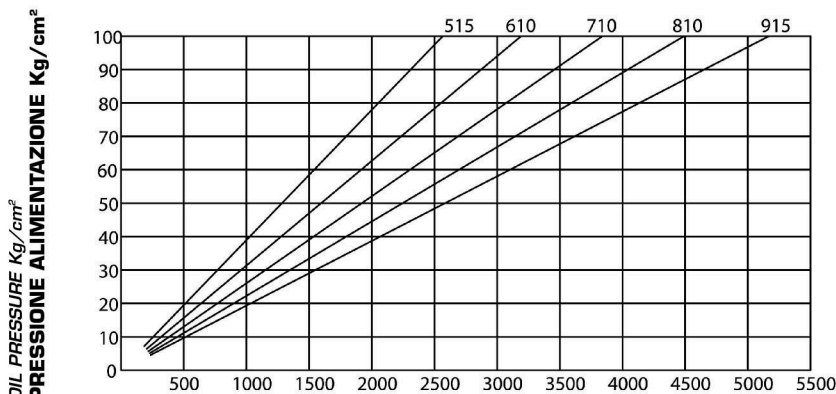
DATI TECNICI

- Md forza frenante:
13000 N a 100 bar
- Coppia dinamica:
= $Md \cdot (\text{raggio disco in m} - 0,062) = Nm$
- Pressione max 100 bar
- Volume olio 0,03 dm³
- Peso 16,8 Kg

TECHNICAL DATA

- Md braking force:
13000 N at 100 bar
- Dynamic torque:
= $Md \cdot (\text{disc radius in m} - 0,062) = Nm$
- Max pressure 100 bar
- Oil volume 0,03 dm³
- Weight 16,8 Kg

DISC DIAMETER mm
DIAMETRO DEL DISCO mm

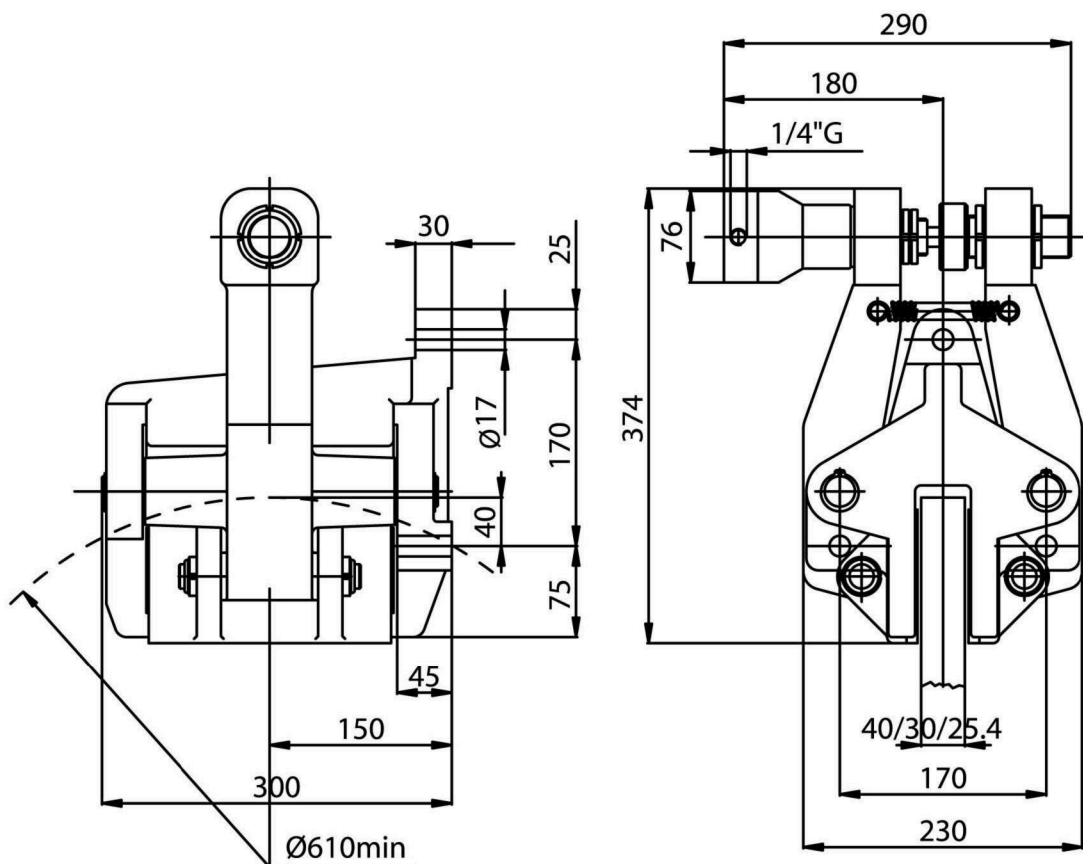


COPPIA FRENANTE Nm
BRAKING TORQUE Nm

PINZE IDRAULICHE POSITIVE

HYDRAULICALLY ACTUATED
CALIPER BRAKES - oil applied

HA-RY3AD

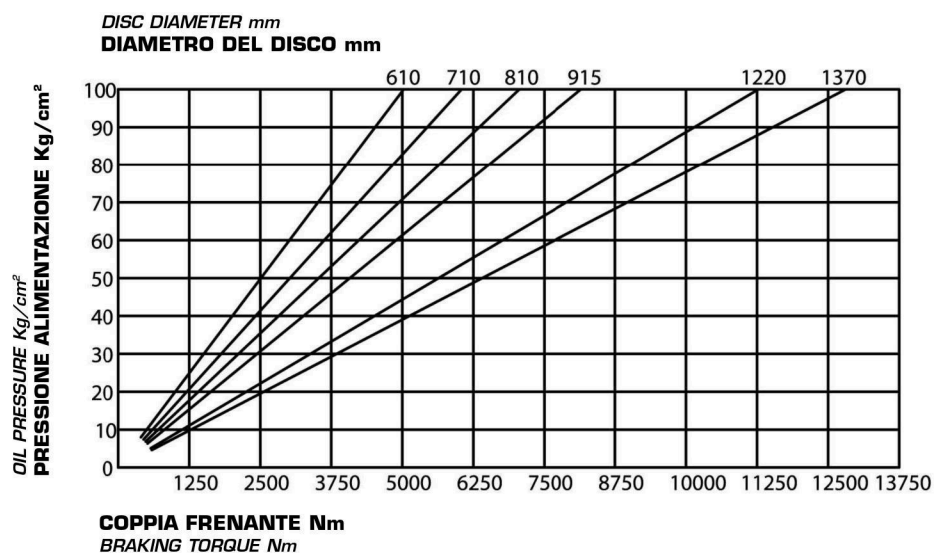


DATI TECNICI

- Md forza frenante:
20500 N a 100 bar
- Coppia dinamica:
= $Md \cdot (\text{raggio disco in m} - 0,065) = \text{Nm}$
- Pressione max 100 bar
- Volume olio 0,03 dm³
- Peso 46 Kg

TECHNICAL DATA

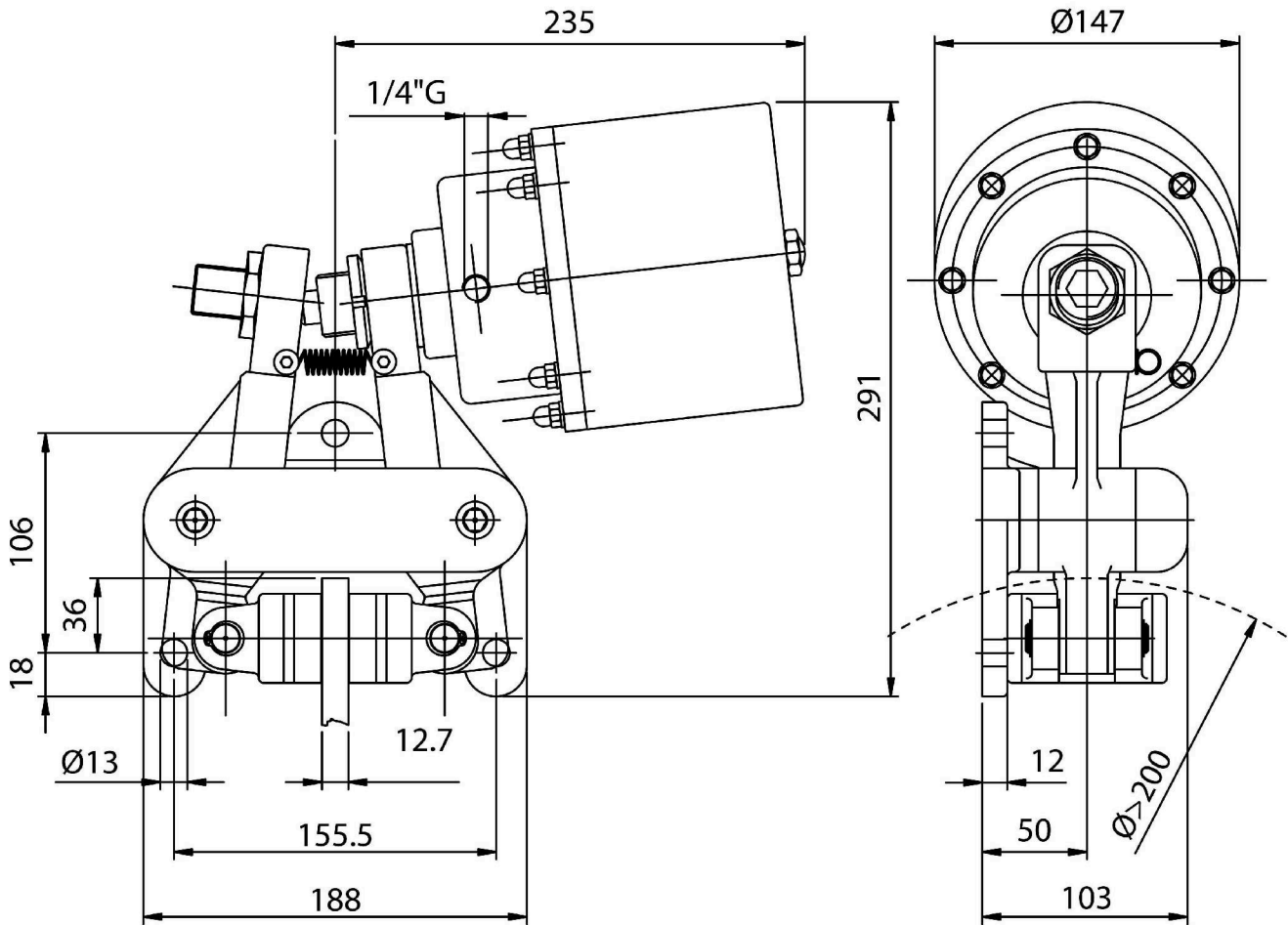
- Md braking force:
20500 N at 100 bar
- Dynamic torque:
= $Md \cdot (\text{disc radius in m} - 0,065) = \text{Nm}$
- Max pressure 100 bar
- Oil volume 0,03 dm³
- Weight 46 Kg



PINZE IDRAULICHE NEGATIVE

HYDRAULICALLY RELEASED
CALIPER BRAKES - spring applied

HR-GYN3AD



DATI TECNICI

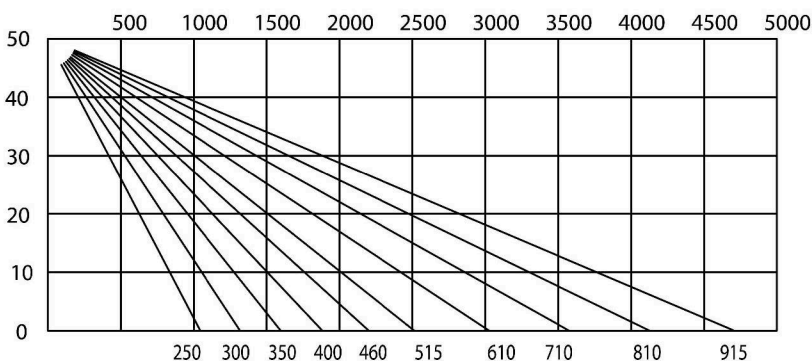
- Md forza frenante:
max 11000 N
- Coppia dinamica:
= $Md \cdot (\text{raggio disco in m} - 0,030) = Nm$
- Pressione minima apertura 50 bar
- Volume olio 0,09 dm³
- Peso 15,8 Kg

TECHNICAL DATA

- Md braking force:
max 11000 N
- Dynamic torque:
= $Md \cdot (\text{disc radius in m} - 0,030) = Nm$
- Least pressure opening 50 bar
- Oil volume 0,09 dm³
- Weight 15,8 Kg

OIL PRESSURE Kg/cm²
PRESSIONE ALIMENTAZIONE Kg/cm²

BRAKING TORQUE Nm
COPPIA FRENANTE Nm

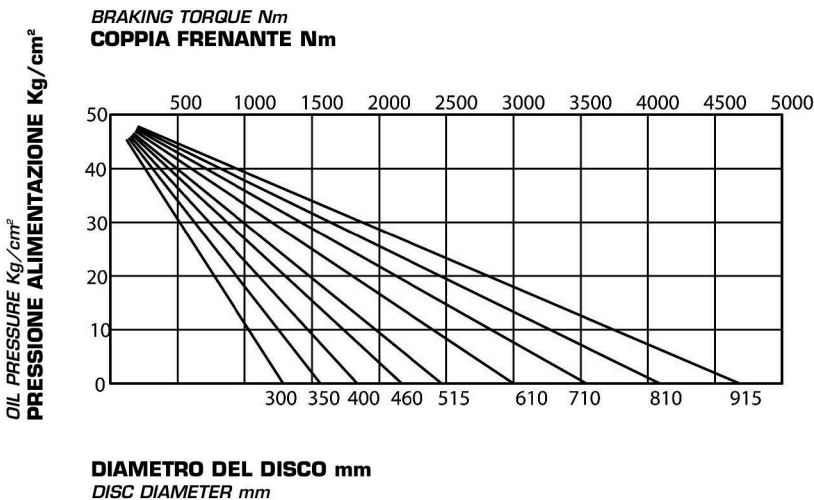
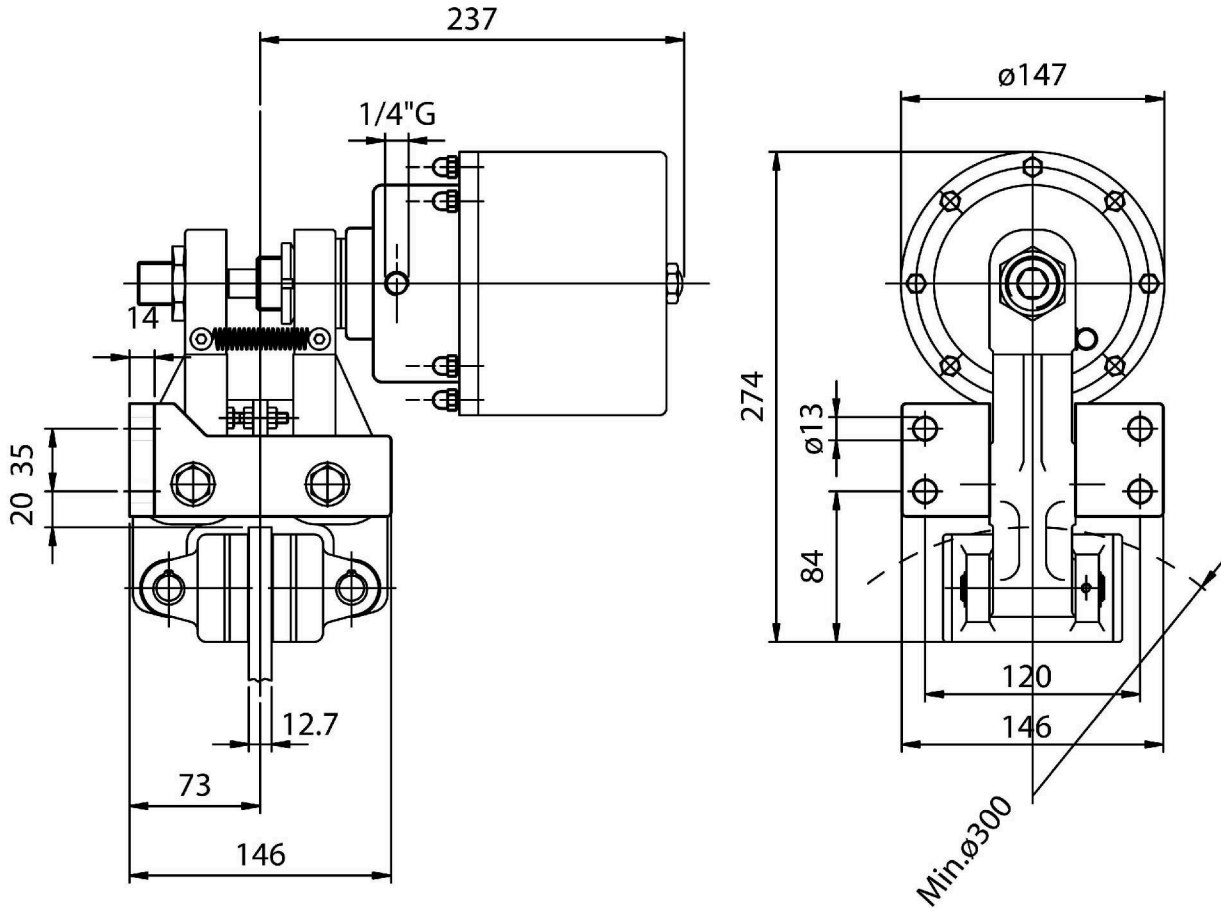


DIAMETRO DEL DISCO mm
DISC DIAMETER mm

PINZE IDRAULICHE NEGATIVE

HYDRAULICALLY RELEASED
CALIPER BRAKES - spring applied

HR-HYN3AD



DATI TECNICI

- Md forza frenante:
max 11000 N
- Coppia dinamica:
= Md · (raggio disco in m -0,033) = Nm
- Pressione minima apertura 50 bar
- Volume olio 0,09 dm³
- Peso 16,3 Kg

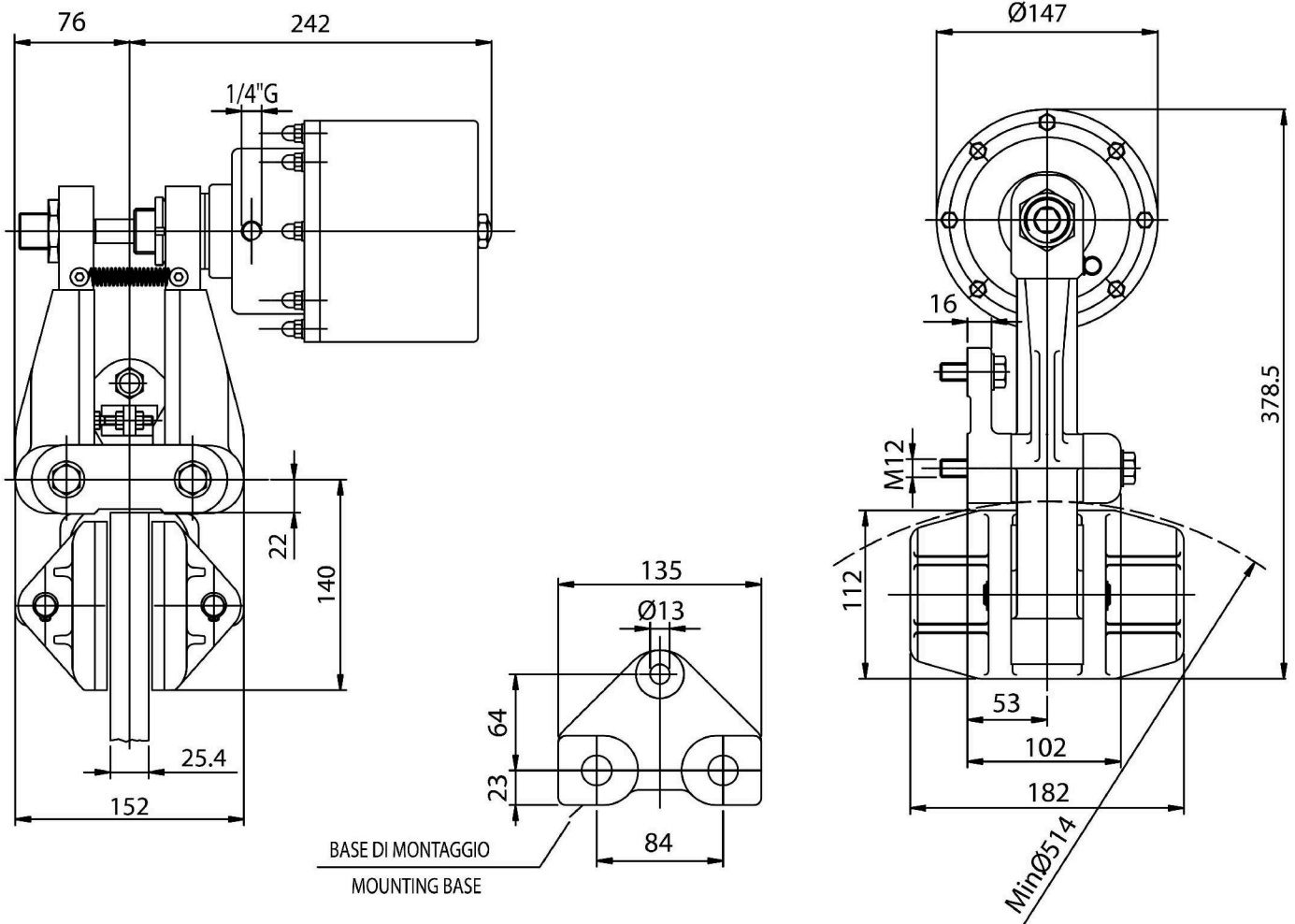
TECHNICAL DATA

- Md braking force:
max 11000 N
- Dynamic torque:
= Md · (disc radius in m -0,033) = Nm
- Least pressure opening 50 bar
- Oil volume 0,09 dm³
- Weight 16,3 Kg

PINZE IDRAULICHE NEGATIVE

HYDRAULICALLY RELEASED
CALIPER BRAKES - spring applied

HR-LYN3AD

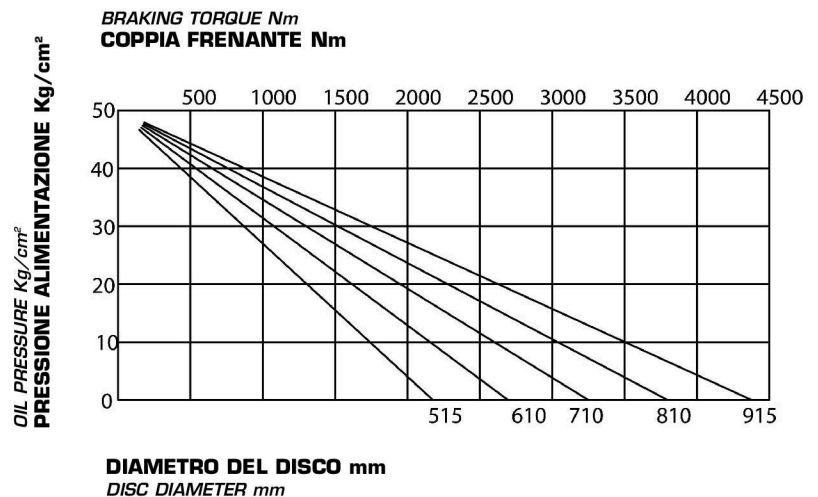


DATI TECNICI

- Md forza frenante:
max 11000 N
- Coppia dinamica:
= $Md \cdot (\text{raggio disco in m } -0,062) = Nm$
- Pressione minima apertura 50 bar
- Volume olio 0,09 dm³
- Peso 21,8 Kg

TECHNICAL DATA

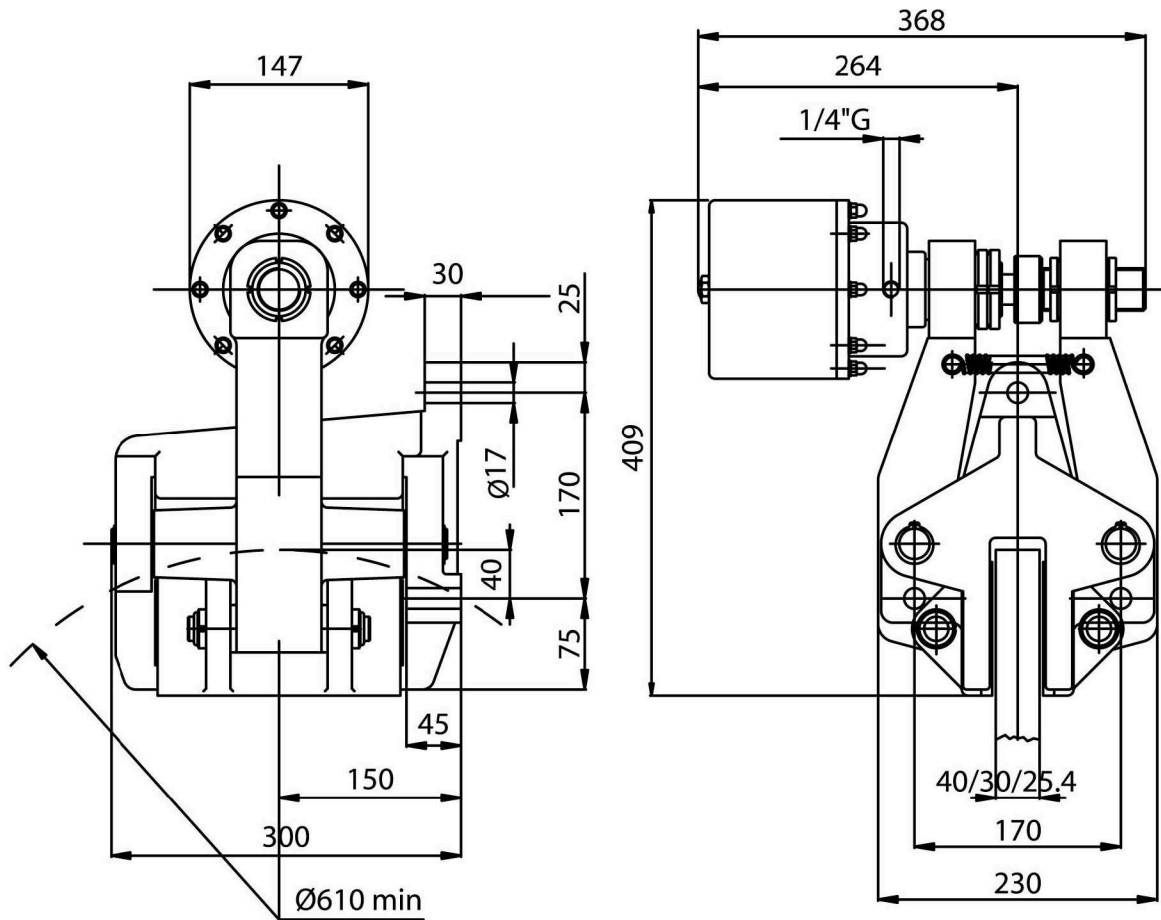
- Md braking force:
max 11000 N
- Dynamic torque:
= $Md \cdot (\text{disc radius in m } -0,062) = Nm$
- Least pressure opening 50 bar
- Oil volume 0,09 dm³
- Weight 21,8 Kg



PINZE IDRAULICHE NEGATIVE

HYDRAULICALLY RELEASED
CALIPER BRAKES - spring applied

HR-RYN3AD

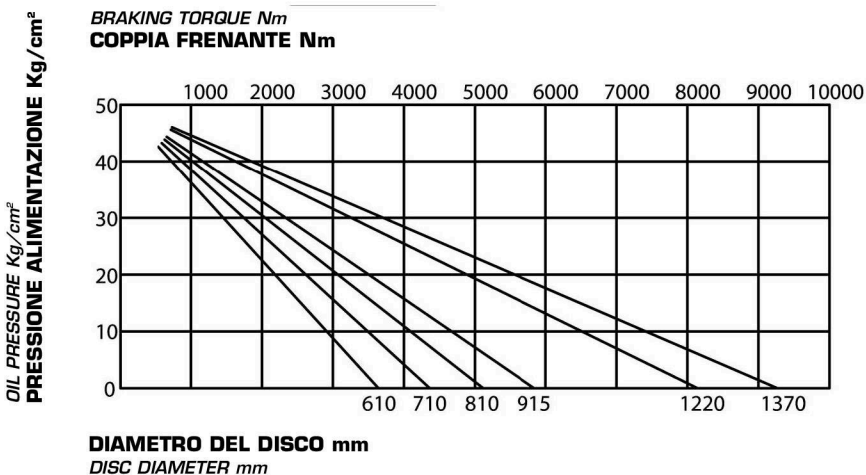


DATI TECNICI

- Md forza frenante:
max 14800 N
- Coppia dinamica:
= $Md \cdot (\text{raggio disco in m} - 0,065) = Nm$
- Pressione minima apertura 50 bar
- Volume olio 0,09 dm³
- Peso 51 Kg

TECHNICAL DATA

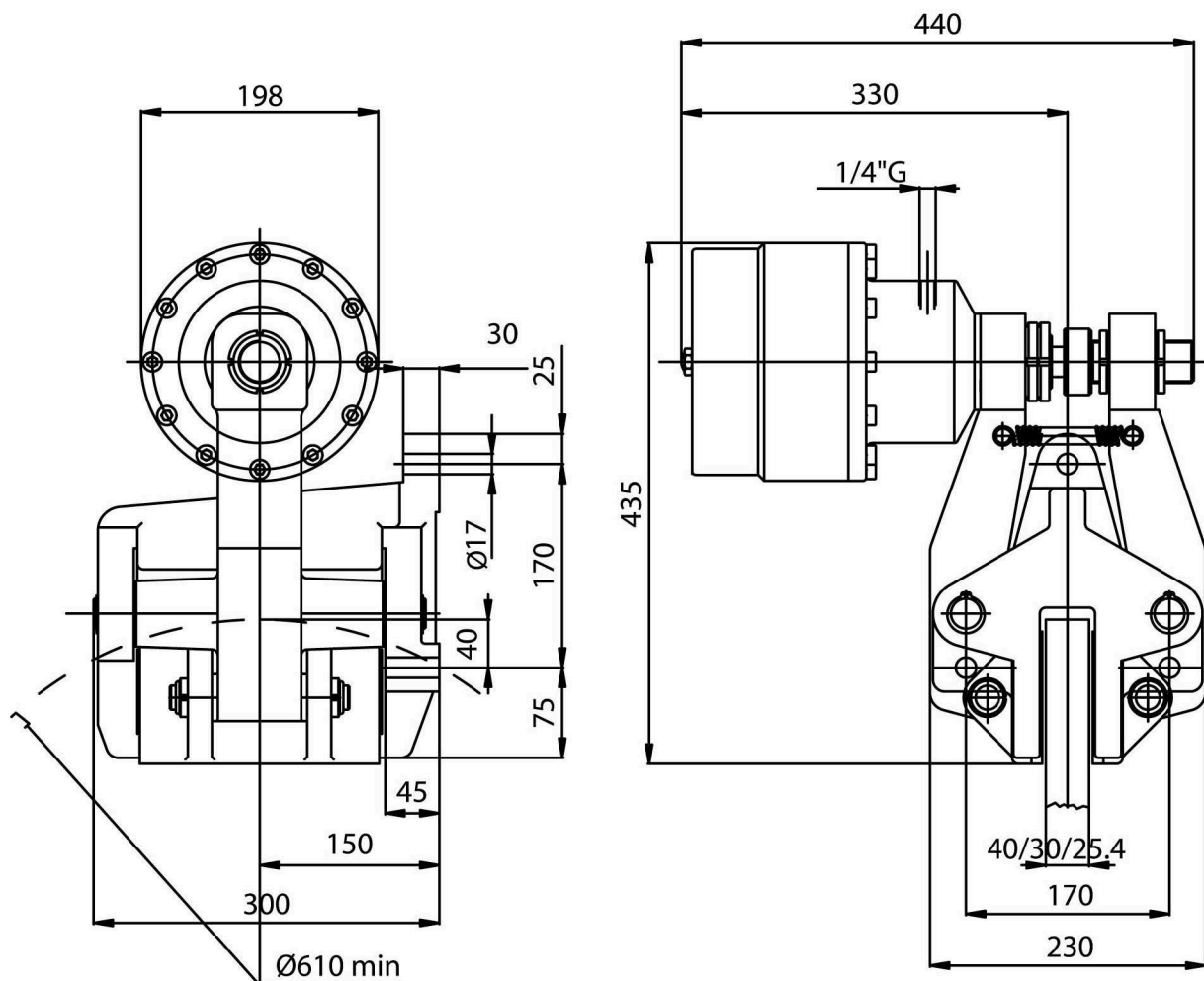
- Md braking force:
max 14800 N
- Dynamic torque:
= $Md \cdot (\text{disc radius in m} - 0,065) = Nm$
- Least pressure opening 50 bar
- Oil volume 0,09 dm³
- Weight 51 Kg



PINZE IDRAULICHE NEGATIVE

HYDRAULICALLY RELEASED
CALIPER BRAKES - spring applied

HR-RYN4AD

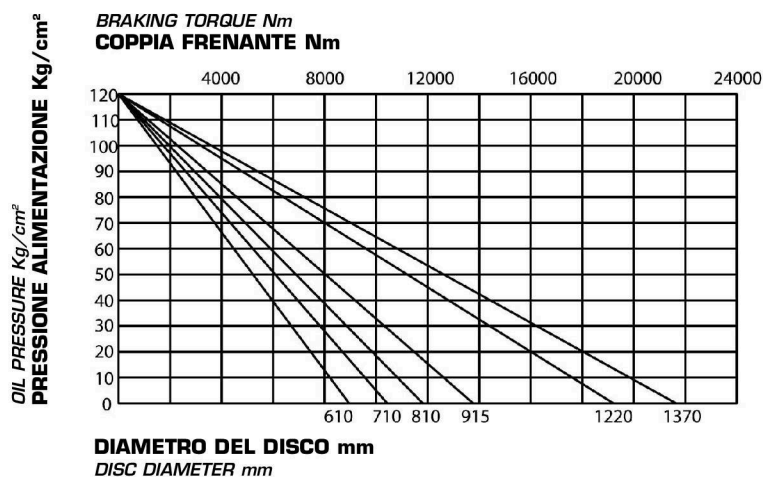


DATI TECNICI

- Md forza frenante:
max 35000 N
- Coppia dinamica:
= $Md \cdot (\text{raggio disco in m} - 0,065) = \text{Nm}$
- Pressione minima apertura 120 bar
- Volume olio 0,15 dm³
- Peso 60 Kg

TECHNICAL DATA

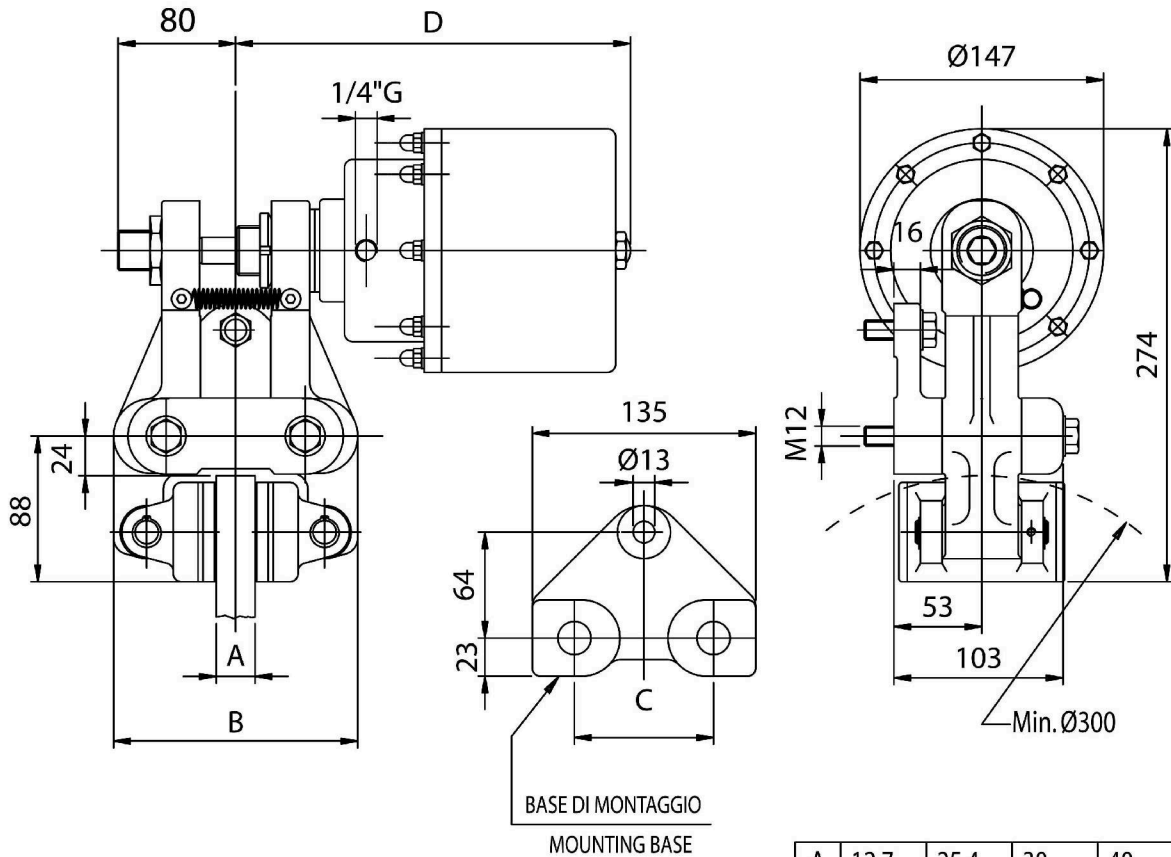
- Md braking force:
max 35000 N
- Dynamic torque:
= $Md \cdot (\text{disc radius in m} - 0,065) = \text{Nm}$
- Least pressure opening 120 bar
- Oil volume 0,15 dm³
- Weight 60 Kg



PINZE IDRAULICHE NEGATIVE

HYDRAULICALLY RELEASED
CALIPER BRAKES - spring applied

HR-XYN3AD



A	12.7	25.4	30	40
B	142	155	160	170
C	75	84	75	84
D	232	232	243	252

DATI TECNICI

- Md forza frenante:
max 11000 N
- Coppia dinamica:
= $Md \cdot (\text{raggio disco in m} - 0,033) = Nm$
- Pressione minima apertura 50 bar
- Volume olio 0,09 dm³
- Peso 16,2 Kg

TECHNICAL DATA

- Md braking force:
max 11000 N
- Dynamic torque:
= $Md \cdot (\text{disc radius in m} - 0,033) = Nm$
- Least pressure opening 50 bar
- Oil volume 0,09 dm³
- Weight 16,2 Kg

